

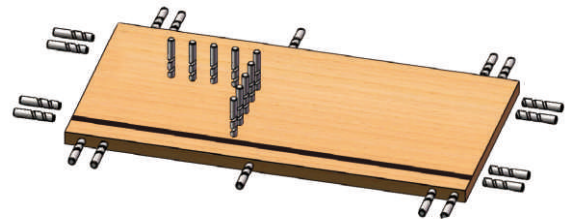


# Nanxing

UPGRADE  
DESIGN

x

## 六面数控钻孔中心 CNC 6 sides Boring Center NCB612D



### 主要技术参数 SPECIFICATION

板材长度Panel length	250-2400mm
板材宽度Panel width	50-1200mm
板材厚度Panel thickness	8-50mm
最大移动速度Max traveling speed	135/135/75/30m/min
最大转速Max rotating speed	18000rpm
垂直钻Vert drills	16*2
水平钻Horiz drills	X 4*2 Y 4*2
下垂直钻Borttom Vert drill	10
总功率Total power	22.5kw
外形尺寸Overall dimension	5700×2990×2050mm
净重Net weight	3750kg

Since

# 1996

Floor Area

# 234000+

Service Point

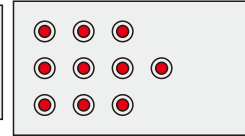
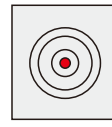
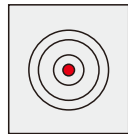
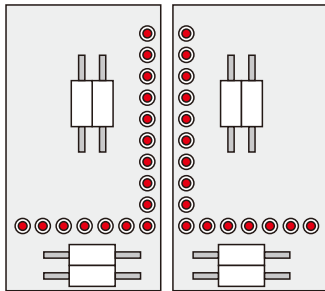
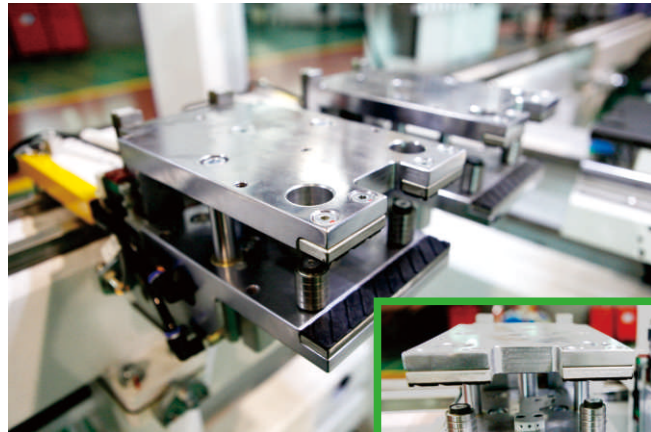
# 100+

About Us



## 双抓手Dual clampers

长距双抓手结构，中间的清洁装置去除板件表面灰尘，抓取更牢固。底部特殊设计，夹手会下沉使板件和下料台在同一水平面避免划痕。  
 Long guiding rail with dual clampers. Cleaning device in between to remove possible chips and dust on workpiece surface for tightly grasping. Special design on bottom, clampers will fall down to make sure workpiece and the unloading table are at same level to prevent possible small scratch.



**上加工单元:Top processing:**  
 双钻包+主轴2 boring blocks+main spindle

3.5kw world famous main spindle  
 Vertical drills: 16\*2  
 Horizontal drills: 4\*2 in X direction; 4\*2 in Y direction

**下加工单元: Bottom processing:**  
 钻包+主轴 1 boring block+main spindle

3.5kw world famous main spindle,  
 10 vertical drills

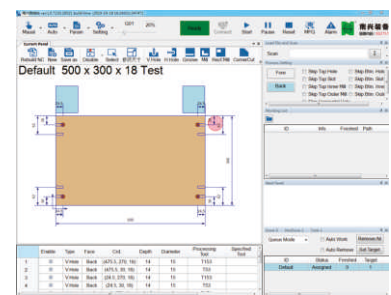


### 伺服移动Movement by Servo

各轴的移动由伺服电机控制，快速而准确。The accurate movement of each axis is ensured by the high quality servo motors. Fast and precise. Max travelling speed: X/U/Y/Z:135/135/75/30m/min



### 扫描枪 Bar code reader



### 新一代控制系统及软件, 操作简便 SYNTEC Control, ease of operation



开放接口 Open port for international popular software